



Decision Support Tools as Opportunities for Engagement & Communication

NCER 2018

Matt Harwell

USEPA Office of Research and Development

Gulf Ecology Division

Co-Authors:

Leah Sharpe, Susan Yee, Chloe Jackson



Disclaimer

The views expressed in this presentation are those of the authors and do not necessarily represent the views or policies of the U.S. Environmental Protection Agency.



Outline

- **Decision Support Tools**
- **Decision Support Tools and Stakeholder Engagement**
- **Examples in Action**
- **Thread Throughout**
 - **Application for Ecosystem Restoration**



Issue

WHAT WE NEED TO UNDERSTAND IS...

Management Questions

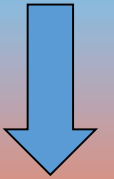
Synthesis of Information for Decision Makers

Other Information and Data Layers

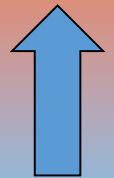
Decision Support Tool(s)

Decision-relevant Information

Managers (Users)



Scientists (Producers)



Specific Research Questions

How Questions?

What Questions?

Why Questions?

Where Questions?

Modified from
Laura Brandt
USWFS



Decision Support Tools

- Tools that help users visualize and integrate information
 - The tools **don't make the decisions**, they represent the information in ways that makes the **process for making** a decision transparent
- Lots of tools fall under this broad category
 - **Part art, part science**
 - Part of the art of using them is determining the most appropriate tool for the task at hand
- EPA Office of Research & Development Approach
 - Engage Stakeholders in Tool Development
 - Eye on Transferability

- **Biases**
 - Wide range of biases influencing decision-making
- **Complexity**
 - Technical complexities, risk potential, uncertainties, incomplete information
- **External Pressures**
 - Time constraints, political considerations



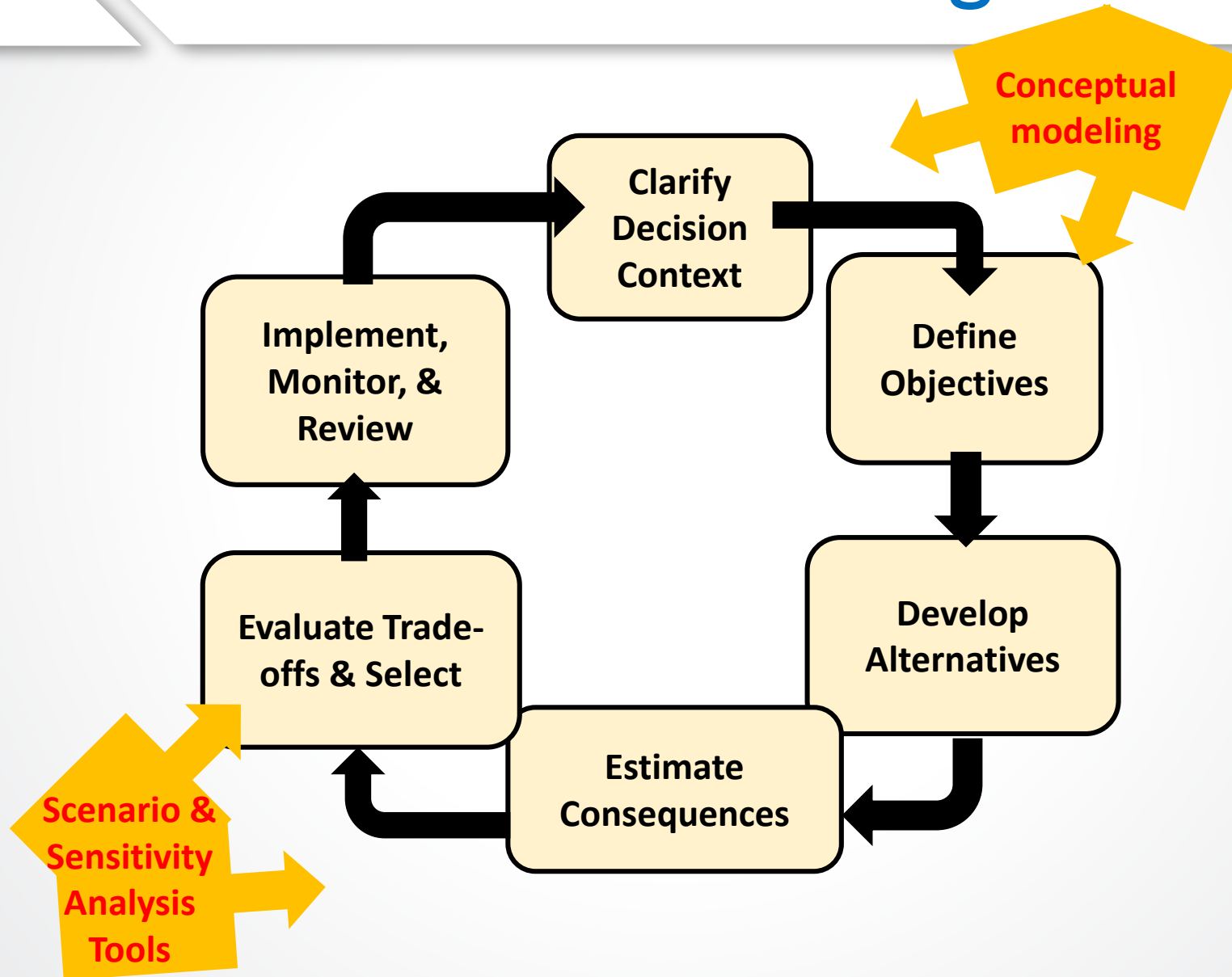


Benefits of Decision Support Tools

- **Transparent**
 - The **information and process** used are explicitly laid out beforehand and can be tracked by those not involved in the process
 - Competing needs can be **explicitly prioritized**
- **Repeatable***
 - Decisions are made **systematically and uniformly**
 - Those not involved in decision making process could use same inputs & tool would result in the same output
- **Inclusive**
 - Clearly & transparently representing & integrating information used in reaching a decision **allows a broader range of participants to engage** in the decision making process
 - Tools can also be used to **evaluate** the decision **from multiple perspectives**



The Decision Making Process





Decision Support Tools & Stakeholder Engagement

- **Two-way street**

- Decision support tools can **facilitate stakeholder engagement** by:
 - Making information used more accessible
 - Clearly defining stakeholders' roles
 - Showing up front how stakeholder input will be used
 - Providing platform for communicating the ultimate decisions & rationale behind them to stakeholders
- Stakeholder engagement can **enhance decision support tool application** by:
 - Identifying **where** in the decision-making process tools would be **most useful**
 - **Identifying most pressing questions** for a tool to address
 - Providing additional information & perspectives for inclusion in the process

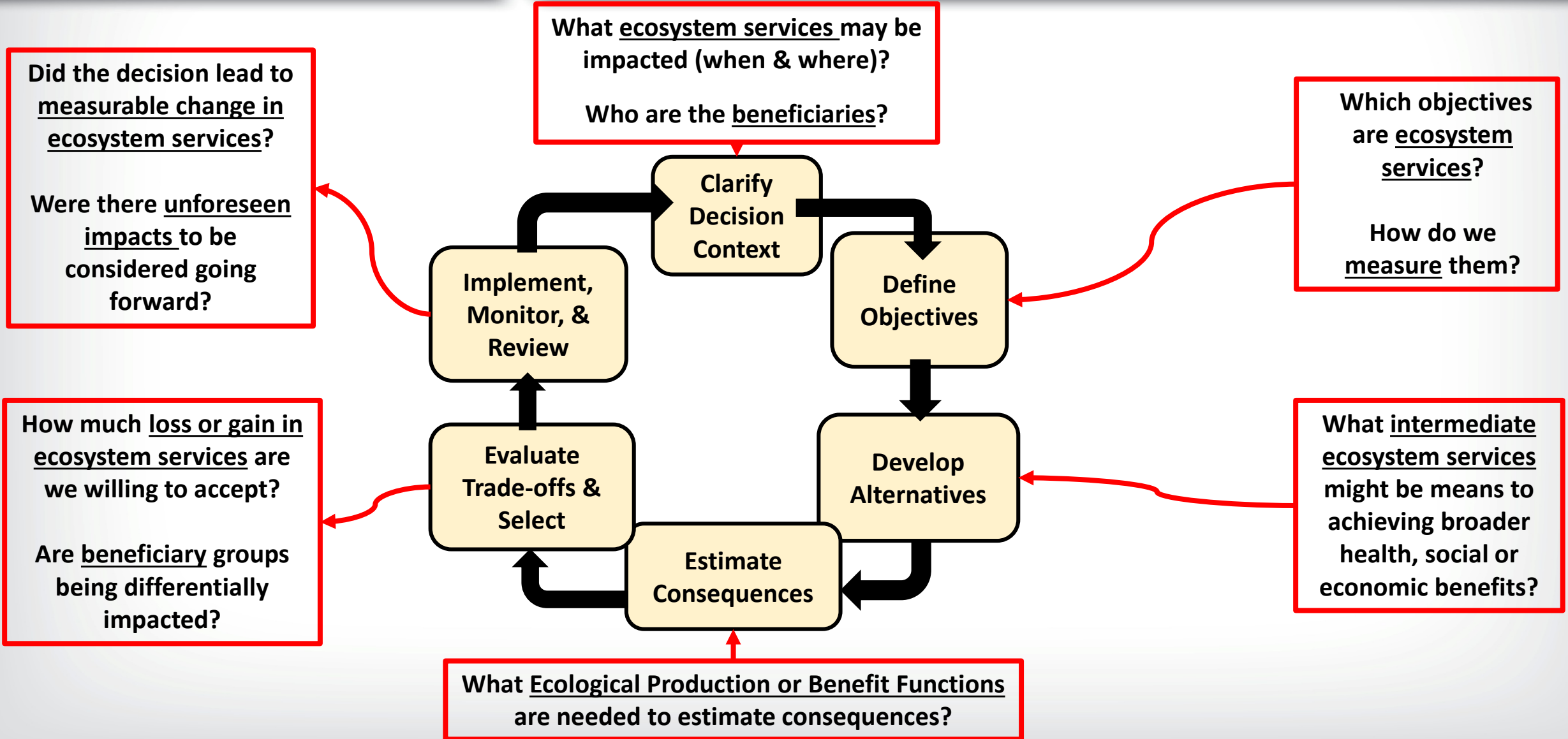
- **Buy-in**
 - Identify if it will be accepted
- **Representation in process**
 - Who incorporate
 - How incorporate
- **Communication**
 - Shape how information is received
- **Project Success**
 - Avoid *Ad-hoc*
 - Engagement vs. participation
 - Better informed & more legitimate decisions



<https://memegenerator.net/instance/67998912/han-solo-points-never-forget-stakeholder-engagement>

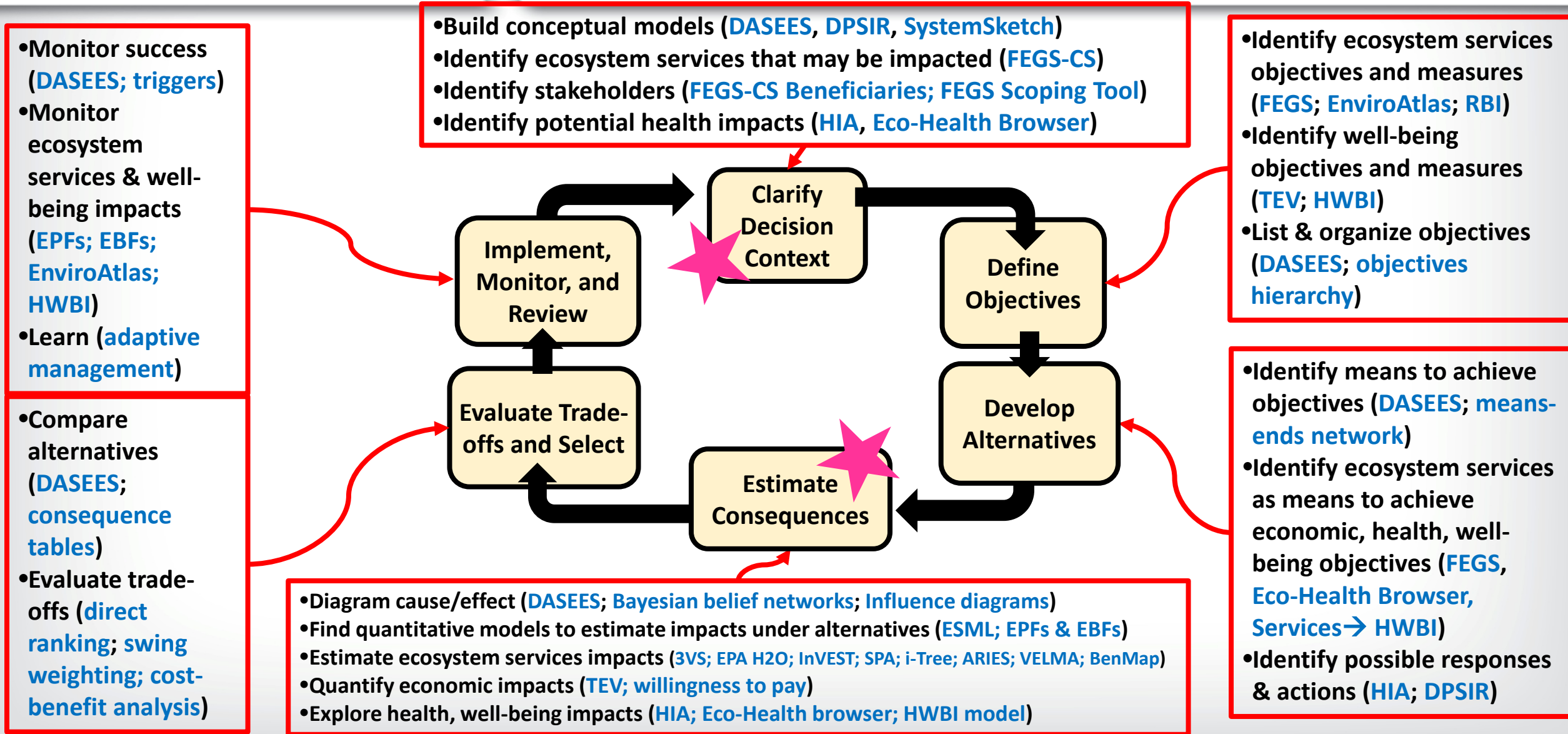


DST for Incorporating Ecosystem Services into Decision Making





DST for Incorporating Ecosystem Services into Decision Making





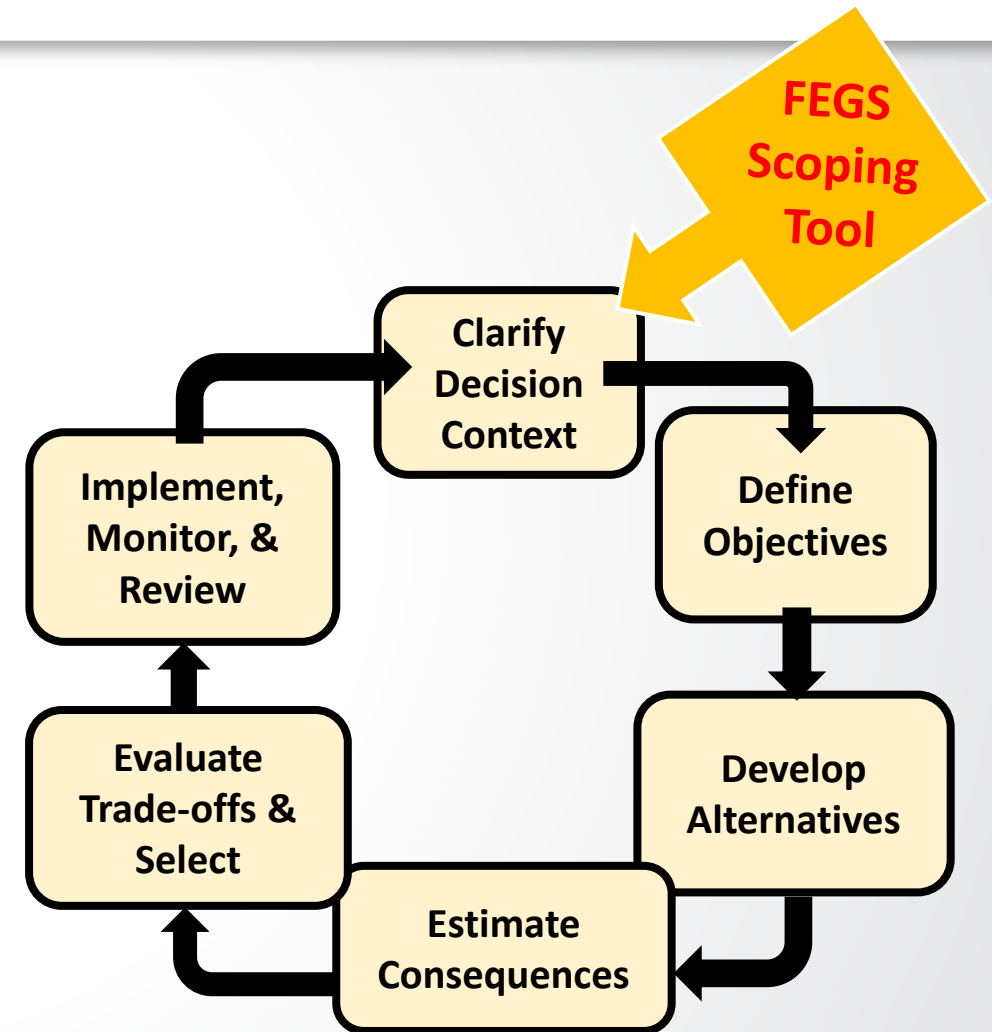
Final/Ecosystem Goods & Services Scoping Tool

- **FEGS Scoping Tool**
 - A tool designed for community decision-makers use at an **early project scoping stage**
 - Used to help **identify and prioritize ecosystem services** for a particular decision/decision context
 - **Prioritize stakeholders**
- **Leah Sharpe Presentation**

• **Wed 140 PM**

Salon H

Session 29

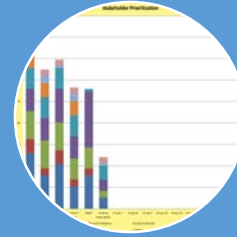




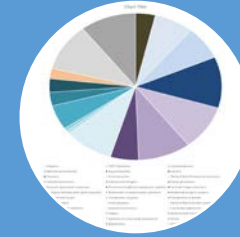
Final Ecosystem Goods & Services Scoping Tool

Improves the decision making process by:

- Identifying the most relevant attributes for the decision process
- Explicitly connecting stakeholder groups to their roles (i.e., how they use/benefit from the ecosystem)



Stakeholder
Prioritization



Beneficiary
Profile



Key Attribute
Identification

Supports stakeholder engagement by:

- Explicitly incorporating the stakeholder perspective
- Allowing decision makers to be transparent about the factors involved with a given stakeholder group's relative influence



Rapid Benefit Indicators Tools

- **Rapid Benefits Indicator Tools**

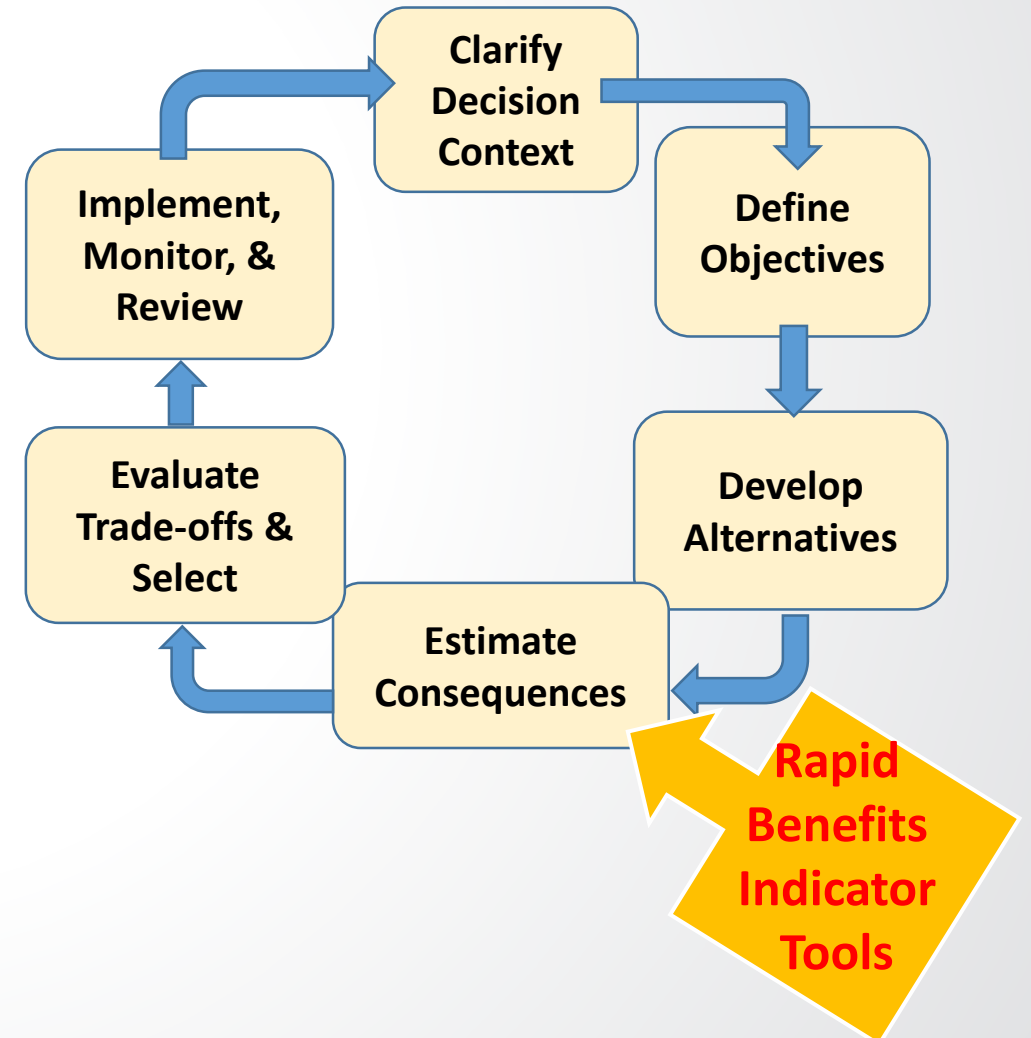
- A **systematic approach** to compiling non-monetary indicators of wetland restoration benefits
- Grounded in **economic theory**
- Examine different decisions when based primarily on **ecological objectives or benefits to people**

- **Justin Bousquin Presentation**

- **Wed 220 PM**

- **Salon H**

- **Session 29**





Rapid Benefit Indicators Tools

Improves the decision making process by:

- Identifying who may benefit from different options
- Summary reports of relevant site-specific features/attributes
- Prioritizing restoration sites based on transparent systematic approach

Supports stakeholder engagement by:

- Identifying tradeoffs in options
- Articulating the benefits to people for a given functional assessment

Scenic Views - Site B

A. Is the site visible from homes, roads or trails? Yes No

B. Will site restoration improve the scenic quality of the landscape? Yes No

C. Scenic View benefits do not require Complementary Inputs (NA) Yes No NA

1. How many people or homes within 160 feet of the site? UNITS?

2. How many people or homes within 325 feet of the site?

3. Do trails or roads pass within 325 feet of the site?

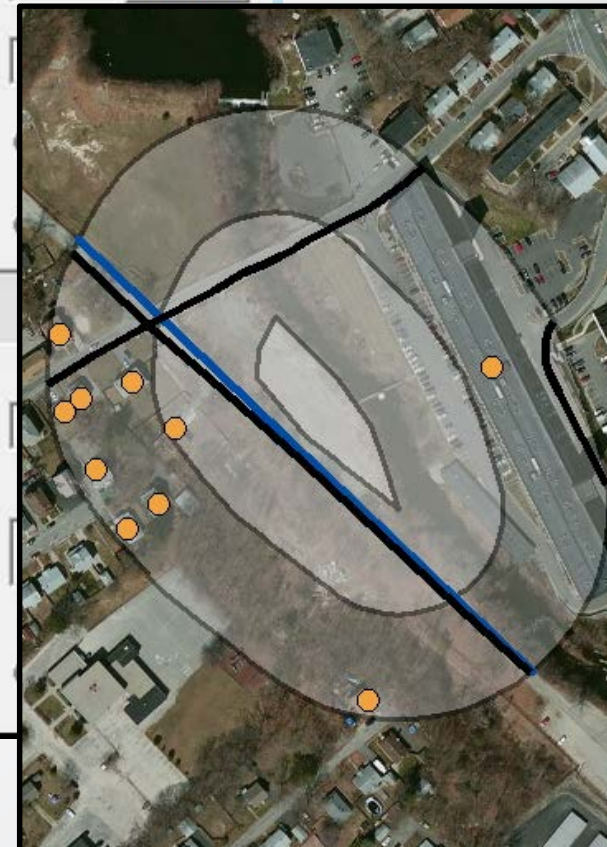
A. 1 Does the site have features or characteristics of aesthetic interest?

Note the features or characteristics

B. How much wetlands and open water are within 650 feet of the site? (number or percent cover)

C. How many different natural land cover types are within 650 feet of the site? (number of types)

D. Does the site meet these people's visual preferences?





EPA H2O Tool for Ecosystem Services Assessment

- EPA H2O Tool

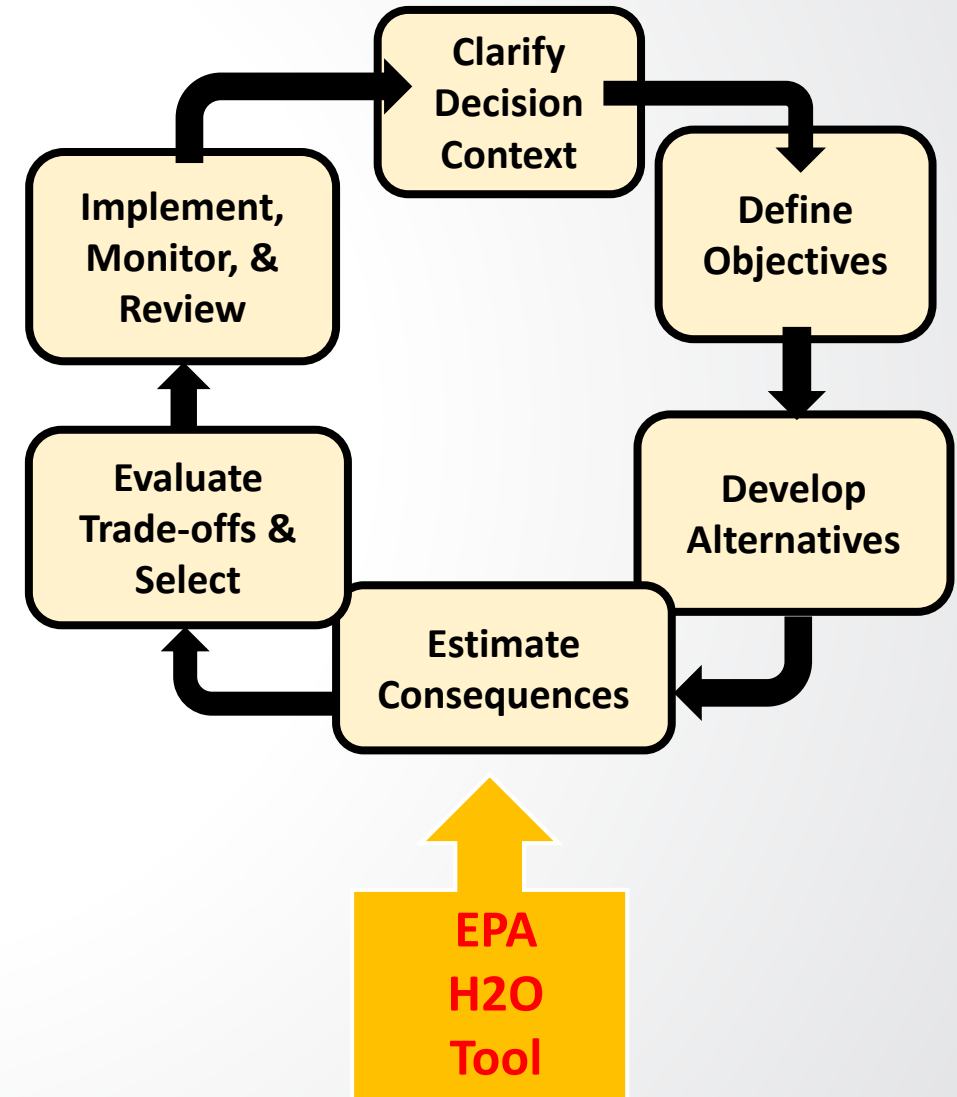
- A tool designed for community decision-makers to use for **analyzing land-use scenarios**
- Used to summarize changes in ecosystem services production at **local neighborhood and regional scales** in common units (\$)

- Marc Russell Presentation

- Wed 200 PM

- Salon H

- Session 29





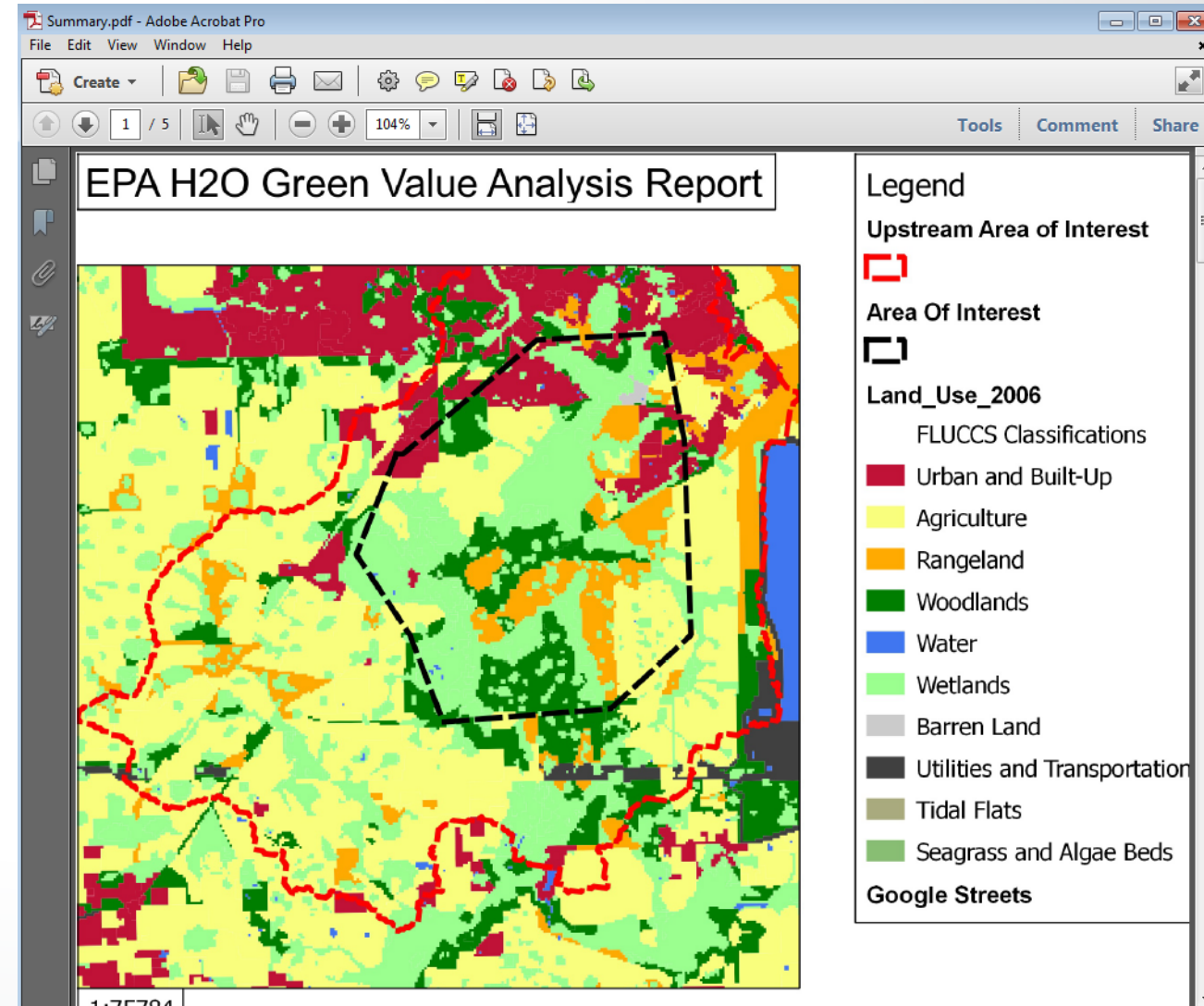
EPA H2O Tool for Ecosystem Services Assessment

Improves the decision making process by:

- Summarizing reports (pdf) of EGS upstream and within area of interest
- Comparing side by side differences of alternative future land use scenarios

Supports stakeholder engagement by:

- Allowing on-the-fly land cover changes for exploring options
- Having a graphical user interface designed for basic or advanced users
- Being based on Open Source Q-GIS software (i.e., no license needed)





Questions and Discussion after Session

